



FEMA

[www.Region2Coastal.com](http://www.Region2Coastal.com)

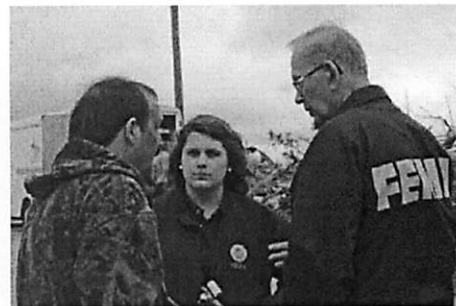


# Rebuilding After Hurricane Sandy

**Stronger. Safer. Smarter.**

## Know Your Updated Flood Risk

- Visit [www.Region2Coastal.com](http://www.Region2Coastal.com) information about Advisory Base Flood Elevations, to find answers to frequently asked questions, and learn tips to rebuild better and safer.
- Under the Hurricane Sandy tab, click "What is my ABFE?"
- Enter your address to determine your property's advisory flood zone and elevation for rebuilding.



## Take Action

- Contact your local floodplain manager or building official for information about local building codes and permit requirements.
- Discuss with your builder or contractor the options for elevating your home.
- Discuss with your insurance agent the options for flood insurance coverage and ways to maximize the discounts on your flood insurance premium.

***Before constructing, property owners should consult their local government officials to determine mandatory elevations for their home or building.***

## For More Information...

- To learn more about the National Flood Insurance Program or find an insurance agent, visit: [www.FloodSmart.gov](http://www.FloodSmart.gov) or call 1-888-229-0437.
- To learn how to build safer and stronger and potentially decrease your flood insurance premiums, download the ***FEMA Building Science Resources to Assist with Reconstruction After Hurricane Sandy*** factsheet by visiting [www.fema.gov/library/viewRecord.do?id=6651](http://www.fema.gov/library/viewRecord.do?id=6651).
- To see if you are eligible for Hazard Mitigation grants and loans, visit: [www.fema.gov/hazard-mitigation-assistance](http://www.fema.gov/hazard-mitigation-assistance).

***Remember: generally the higher you build, the lower your flood insurance premium.***